

	<b>Transport Handout</b>	
	Grand Prix Historique de Dakar	Version 1



**28,29,30 Novembre 2012.**

	<p style="text-align: center;"><b>Transport Handout</b></p>	
	<p style="text-align: center;">Grand Prix Historique de Dakar</p>	<p style="text-align: center;">Version 1</p>

## 1.0 Explanation

This transport handout is agreed with Rêve d’Afrique scp SENEGAL. The intention of this guideline is to keep the organizer and the teams always updated concerning planning and regulations of transport.

Please note that this handout will be updated if necessary. The current version is shown in the headline on the right (Version 1 / 2 etc.)

All changements will be marked in **red** and all new information will be marked in **blue**.

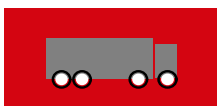
	<h2>Transport Handout</h2>	
	Grand Prix Historique de Dakar	Version 1

## 2.0 Estimated time schedule

### Estimated time schedule for Grand Prix Historique de Dakar



Ocean freight



Trucking

	weekday	dates	time
<b>Antwerp</b>			
Loading of containers by teams in Antwerp	Thursday	25.10.2012	
Customs Clearance	Friday	26.10.2012	
Closing	Friday	26.10.2012	
departure of vessel	Monday	29.10.2012	
arrival of vessel in Dakar	Sunday	11.11.2012	
<b>Dakar</b>			
Unloading of containers by teams at Circuit de Dakar	Monday/Tue	26/27.11.2012	
Race	Tue/Fri/	29/30.11.2012	
Container loading by teams OPTIONAL	Saturday	1.12.2012	17.00
Pickup of Containers OPTIONAL	Monday	3.12.2012	
Seafreight to Antwerp OPTIONAL	Monday	5.12.2012	
<b>Antwerp</b>			
Handover to teams	Monday	15.12.2012	

	<b>Transport Handout</b>	
	Grand Prix Historique de Dakar	Version 1

### 3.0 Seafreight from Antwerp to Dakar / Circuit de Dakar Baobabs

Transit time port/port :  
Antwerp – Dakar : approx. 12 - 14 days  
Dakar – Antwerp: approx. 8 - 9 days

For loading and stuffing of containers the meeting point will be our warehouse which is situated directly in the port area of Antwerp.  
Address details:

**CWT Commodities (Antwerp) NV**  
**Berendrecht Complex**  
**Kruisweg - Haven/Quay 650**  
**B - 2040 Antwerpen**  
**Belgium**

**Philippe Brackman - Operations & Business Development Manager**  
**Tel +32 3 560 49 33**  
**[philippe@be.cwtcommodities.com](mailto:philippe@be.cwtcommodities.com)**

If you would like to have your transport from an other port in Europe, a customer made offer or you have questions regarding the transport of your car and equipment, please contact [Nico.VanBoeckel@dhl.com](mailto:Nico.VanBoeckel@dhl.com)

We will issue an exact time schedule showing to each team exact date and time for loading containers in Antwerp.

***Important:*** Please make sure to be on time at the warehouse. Teams arriving late after their assigned spot can only be handled once all other teams are finished!  
Please note that stuffing / loading will be done outside and there is no protection against weather. In case of rainy weather, pls. hold ready some foil or tarpaulin, if required.

### 4.0 Loading / Stuffing of Container

	<p style="text-align: center;"><b>Transport Handout</b></p>	
	<p style="text-align: center;">Grand Prix Historique de Dakar</p>	<p style="text-align: center;">Version 1</p>

For transportation by sea freight we will use standard 40' Containers and 20' Containers



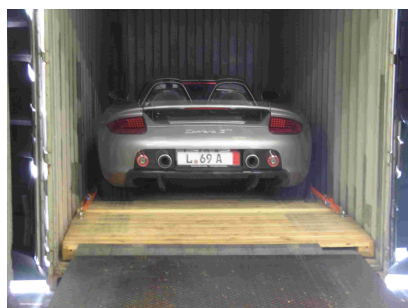
Maximum Dimensions 40' Container:  
12,070 x 2,330 x 2,380m (L x W x H) inside  
Door: 2,339 x 2,274 m (W x H)  
Capacity: Maximum 67cbm (because of unequal forms of pallets there is always a loss of space!)

Maximum Dimensions 20' Container:  
5,896 x 2,35 x 2,380m (L x W x H) inside  
Door: 2,339 x 2,274 m (W x H)  
Capacity: Maximum 33cbm (because of unequal forms of pallets there is always a loss of space!)

DHL staff will assist during stuffing and loading procedure with technical equipment as forklifts and handlifts. **The teams take full responsibility for secured lashing of cars and equipment.**

Car:

**For lashing at least 4 straps per car are necessary which have to be provided by teams.**



	<b>Transport Handout</b>	
	Grand Prix Historique de Dakar	Version 1

**Please make sure that the tank does not contain more than 5 litres fuel. Battery must be disconnected.**

Equipment / Spare parts:

**Pls. provide enough straps for lashing.**

## **5.0 Handover of cars and equipments at Circuit de Dakar Baobabs**

Sea freight containers will be ready for unloading by teams from Monday 26.11.2012.

## **6.0 Costs for seafreight roundtrip Antwerp – Dakar – Antwerp**

All transport costs Antwerp Dakar-Antwerp are included in the entry fee.

**Pls. advise your requested container space till latest 15.10.2011 to DHL.**

## **7.0 Return by seafreight ex Dakar to Antwerp (Optional)**

Transit time port / port approx. 8 - 9 days.

Seafreight containers have to be loaded by teams directly after the race. Please make sure that stuffing and lashing of cars will be finished till latest 7.00PM. Everything you imported temporarily to Senegal must be re-exported – even broken or useless parts.

## **8.0 Handover of cars and equipment to teams in Antwerp after return from Senegal**

We will communicate an exact time schedule in due time.

## **9.0 Documentation for Customs Clearance**

***All Documents must be send as copies by email to DHL till latest 15.10.2012!!!***

	<b>Transport Handout</b>	
	Grand Prix Historique de Dakar	Version 1

For temporary customs clearance we require an Invoice / Packinglist. Pls. use the attached excel file, copy in your letterhead and fill it in accurately, sign it with blue ink and stamp it. Description must be in English. We require one original and 3 copies.

**Pls. bring originals and copies to Antwerp and do not forget to send a copy as scan doc by email to DHL till latest 15.10.2012**

If you want to send consumables pls. issue a separate invoice for this material and stay under € 1.000,00 total value.

## 10.0 Packaging

In any cases all cargo must be proper packed and stackable. Use of untreated wood is strictly forbidden!

## 11.0 Dangerous goods

Dangerous goods are not accepted for the seafreight. Only cars with max. 5 litres fuel, spare engines, empty fuel cans are accepted. Sprays, flammable liquids, compressed gas, gas bottles etc. are forbidden. If you plan to send dangerous goods you have to arrange for approved packaging, IMO declaration and Material Safety Data Sheets. Dangerous goods without correct packaging and paperwork can't be transported.

## 12.0 Insurances

We would like to point out specifically that in case of any damages during the transportation procedure the insurance by law of ocean carriers and DHL covers only EUR 2,30 / kg - Maximum EUR 1.500,00 per case of damage.

**Any higher insurance protection is at your own responsibility!**

	<p align="center"><b>Transport Handout</b></p>	
	<p align="center">Grand Prix Historique de Dakar</p>	<p align="center">Version 1</p>

**For French, English and Dutch speaking, please contact:**

Nico Van Boeckel  
Export department  
DHL Global Forwarding (Belgium)NV/SA  
Antwerpsebaan 56 - tov kaai 730  
B-2040 Antwerpen  
Tel: ++ 32 3 561 11 93  
Fax: ++32 3 561 03 39  
Email: [Nico.VanBoeckel@dhl.com](mailto:Nico.VanBoeckel@dhl.com)  
[www.DHL.com](http://www.DHL.com)

We operate exclusively in accordance with the latest version of the Allgemeinen Deutschen Spediteurbedingungen - ADSp - ( German Forwarders' General Terms and Conditions of Trading). THESE LIMIT IN PARAGRAPH 23 ADSp THE LEGAL LIABILITY FOR DAMAGE TO GOODS IN THE CASE OF DAMAGE TO GOODS WHILST IN THE CARE OF A FORWARDER TO € 5/KG, IN ACCORDANCE WITH § 431 OF THE GERMAN COMMERCIAL CODE ( HGB ); IN THE CASE OF MULTIMODAL TRANSPORTS, INCLUDING SEA TRANSPORT TO 2 SDR/KG ( SPECIAL DRAWING RIGHTS) PLUS, IN ADDITION, PER DAMAGE OR EVENT TO € 1 MILLIONS OR € 2 MILLIONS RESPECTIVELY, OR 2 SDR/KG WHICHEVER IS THE GREATER.